

GCS TOPGUARD® PATROL

TopGuard® Patrol is very easy to use software that provides the core tools for planning guard tours, collecting tour data and generating tour reports.

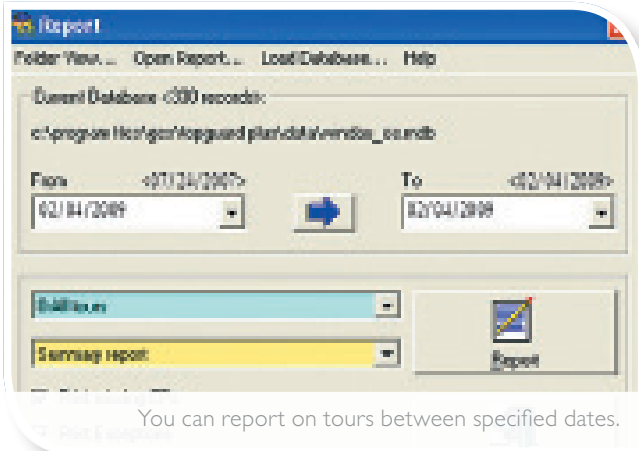
TopGuard Patrol enables you to produce comprehensive tour Summary Reports, which show the checkpoints visited, the name of the guard who performed the tour and any incidents encountered. TopGuard helps you to keep track of the tours you are carrying out and ensures that all the tour information is readily available for evaluation. Easily adaptable for other facility management service verification tasks.

TopGuard Patrol is the basic version of the popular Guarding software from GCS. Other products in the range include:

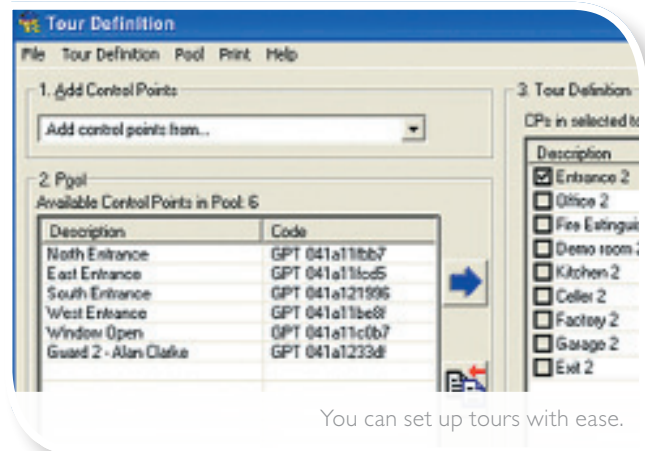
TopGuard® Patrol Plus – A cost effective patrol system built on the Patrol platform suitable for use by small to medium sized guarding companies, with a maximum of 7500 checkpoints and 250 tours.

KEY FEATURES

- Easy-to-use software supplied free of charge with ProxiPen® kits
- Provides the core tools for tour reporting
- Up to 16 tours and 1750 checkpoints
- Comprehensive Summary Report enables completed guard tours to be reviewed
- Incidents and the guard's name can be recorded during a tour
- Compatible with all GCS data-collection devices (DAU'89 or later)
- Uses Microsoft® operating systems including Windows 2000, XP, Windows 7 and Vista
- Upgradable to TopGuard Patrol Plus



You can report on tours between specified dates.



You can set up tours with ease.

LIMITS

- Maximum of 16 tours and 1750 checkpoints

TAG USAGE

- TopGuard Patrol allows RFID tags to be associated with:
 - Checkpoints – to check that each location in a tour has been visited.
 - Incidents – to record important tour events (e.g. “window open”)
 - Personnel – to record the name of the guard performing the tour

SYSTEM SECURITY

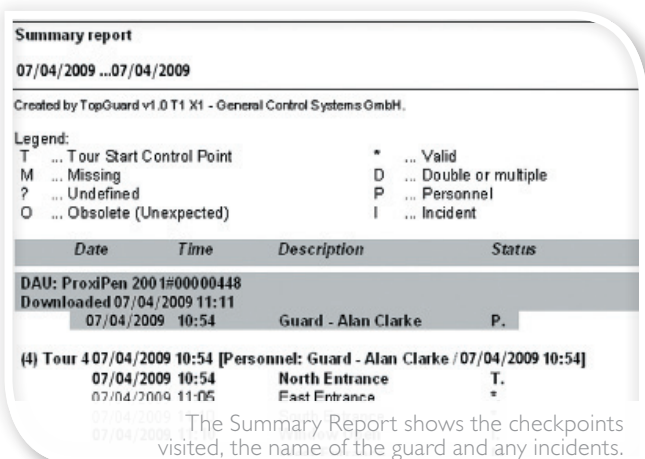
- Optionally, access can be given after providing a valid username and password
- Provides both User and Administrator access levels

REPORTS

- Easy to read Summary Report
- The report includes details of each tour, including the time that each checkpoint was visited, checkpoints missed, the name of the guard and any incidents
- Selectable date range for report
- Reports can be printed, saved, sent as an email or produced as an Acrobat® PDF document

INPUT/OUTPUT

- Tour data can be downloaded from any GCS Escorte or Proxipen data collection device using a Data Transfer Unit (DTU), directly or via an optional modem
- Upgradable to TopGuard Patrol Plus
- Data import of checkpoints and tours from GCS Patrol Manager and GCS WinArgus



The Summary Report shows the checkpoints visited, the name of the guard and any incidents.



AMAG Technology

gcsenquiries@amag.com

www.amag.com/eu